

Muscliff Primary School

WEEKLY BULLETIN



Friday 12th December 2025

News and highlights



We would like to say a massive THANK YOU to the Friends of Muscliff for a very successful Festive Fayre last Friday, raising over £2400 - thank you to all the parents, children and staff who helped on stalls, and to all the families who came along to support!

Thank you also to all the companies who provided raffle prizes.

This week in Assembly we heard the story 'Emmanuel's Dream', which is based on a true story of a boy who was born with a disability. Emmanuel Ofose Yeboah cycled an incredible 400 miles across Ghana - with only one strong leg - to spread his powerful message: disability does not mean inability. We asked the children to reflect on something that they struggle with: 'How can you show resilience, courage and perseverance like Emmanuel did?'



Key upcoming dates to be aware of:

Monday 15th Dec Y3 Parent Christmas Craft 2pm and Y1 Christmas songs performance 2:30pm

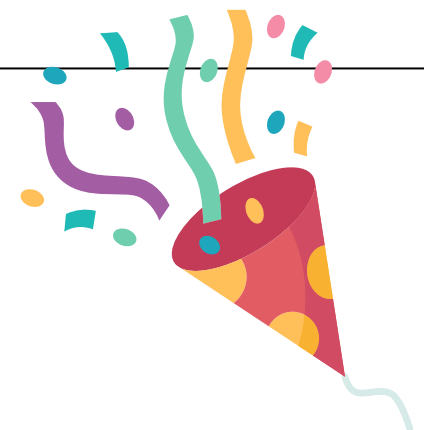
Tuesday 16th Dec Y1 Christmas songs performance 9:30am and Y2 Christmas singing and craft 2pm

Wednesday 17th Dec Y6 War assembly 1:45pm

Wednesday 17th: Y5/6 Girls Football match 3pm

Thursday 18th Dec Y6 War assembly 1:45pm, Reception Disco 2pm

Friday 19th Dec Whole school non-uniform day 1.30pm finish, Christmas holidays begin. Return to school Tuesday 6th January 2026



Muscliff Primary School



Bournemouth Foodbank Festive Fun at the Sovereign Centre 6th/7th/20th/21st December: there will be singing, facepainting, reindeer food making and activities.

Christmas Social Canteen 12th and 19th December 5-7pm: a pay as you feel community meal at The Garden Rooms Café at Bournemouth Foodbank, 118 Haviland Road, Boscombe.

2025-26 including INSET days:

2025	Thursday 4th September - Friday 24th October 2025 (normal finish)
Term break	Monday 27th October – Friday 31st October 2025
	Wednesday 3rd September 2025- INSET day (school closed)
2025	Monday 3rd November - Friday 19th December 2025 (1.30pm finish)
Holiday	Monday 22nd December – Friday 2nd January 2026
	Friday 21st November - INSET day (school closed)
2026	Tuesday 6th January – Friday 13th February 2026 (normal finish)
Term break	Monday 16th February – Friday 20th February 2026
	Monday 5th January- INSET day (school closed)
2026	Monday 23rd February – Friday 27th March 2026 (1:30pm finish)
	Monday 30th March – Friday 10th April 2026
2026	Monday 13th April – Friday 22nd May 2026 (normal finish)
	Bank Holiday: 4th May – School closed
Term break	Monday 25th May – Friday 29th May 2026
2026	Tuesday 2nd June – Wednesday 22nd July 2026 (1.30pm finish)
	Monday 1st June - INSET day (school closed)
	Friday 3rd July - INSET day (school closed)
Term begins	Thursday 23rd July 2026- start of the summer holiday

If you need to contact a member of staff:
receptionstayintouch@muscliffprimary.co.uk
year1stayintouch@muscliffprimary.co.uk
year2stayintouch@muscliffprimary.co.uk
year3stayintouch@muscliffprimary.co.uk
year4stayintouch@muscliffprimary.co.uk
year5stayintouch@muscliffprimary.co.uk
year6stayintouch@muscliffprimary.co.uk
General enquiries: muscliff@muscliffprimary.co.uk

Food Menu choices: You are able to order your child's food up until February Half Term.

Please can we ask you order by Thursday lunchtime, for the following week (at the latest) so we can order and prepare food in time.

Deadline for ordering for first week back is Wednesday 17th December.

Thank you.

[Letters/Emails sent this week via Arbor:](#)

Whole School: School Meals after Christmas, ASD support for parents, Whatsapp support service, HAF Christmas holiday club, TheatreKidz Spring term information, Ordering photos, Bournemouth Foodbank, Bike sizing advice,

Specific children: Year 6 Boys Football match invitation, Running club cancellation, Year 4-6 Girls Football match confirmed date

Year 6: War Assembly 1.45pm on 17th & 18th Dec
Year 3: Parent craft Monday 15th at 2pm
Year 2: Parent craft Tuesday 16th at 2pm
Reception: Donations towards Nativity on Arbor

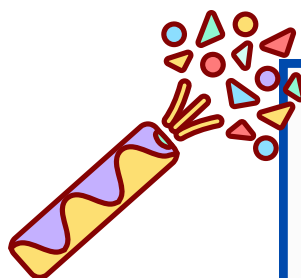
Reception starters -September 2026
Deadline for school place applications is
15th January 2026

<https://www.bcpccouncil.gov.uk/Schools-and-learning/School-admissions>



We have received a generous donation of brand new toys from one of our families, to support the children at Muscliff.

If you need any financial or practical help this Christmas, please contact Charlotte.blanch@muscliffprimary.co.uk



On Friday next week there will be a whole school non-uniform day as a reward for a great Autumn term. We hope you have a lovely weekend,

The Muscliff Team